



Georgia Society of Professional Engineers

A state society of the National Society of Professional Engineers

AUGUSTA CHAPTER MONTHLY MEETING

**Wednesday,
October 21, 2009 at 12 noon
Lunch Catered - \$10.00**

(RSVP By 12pm, Monday, October 19, 2009)

LOCATION

**ENTERPRISE MILL – Conference Room
(1st Floor, between 2 elevators – map attached)
Augusta, Georgia 30901**

GUEST SPEAKER

**Mr. Oscar Flite
Southeast Natural Science Academy**

PROGRAM

Constructed Wetlands

Please RSVP with Beth Schachtner
bschachtner@wrtoole.com

W. R. Toole Engineers (706) 722-4114

AUGUSTA CANAL

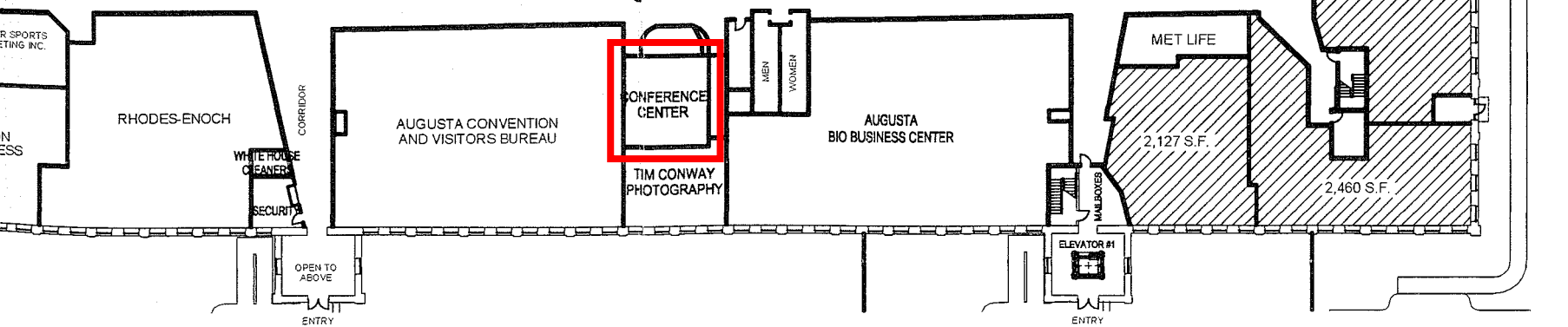
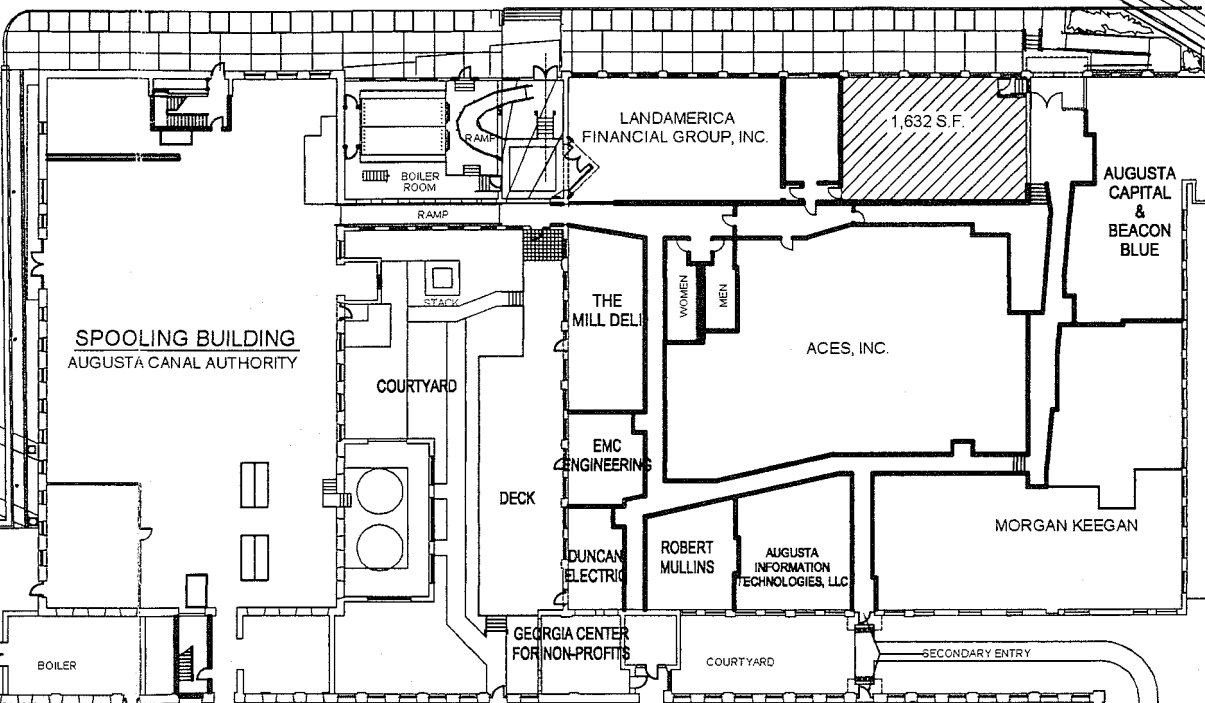
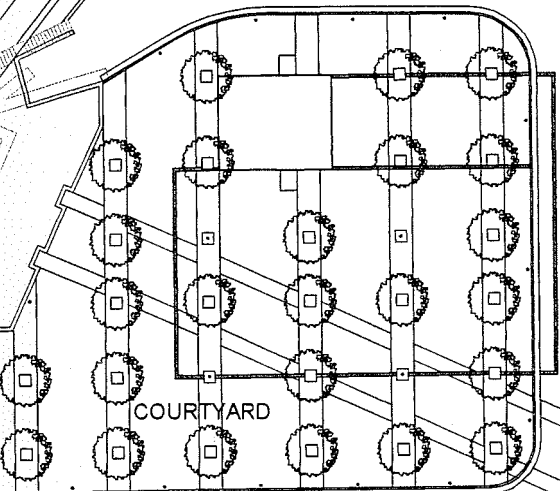
EVENTS CENTER
3,682 S.F.

3,674 S.F.

3,535 S.F.

CONFERENCE BUILDING

PENIX-HAMILTON



GREENE STREET

ENTERPRISE MILL
GROUND FLOOR PLAN

LEGEND

-  AVAILABLE
-  LEASED

15th Street

conference room

parking

